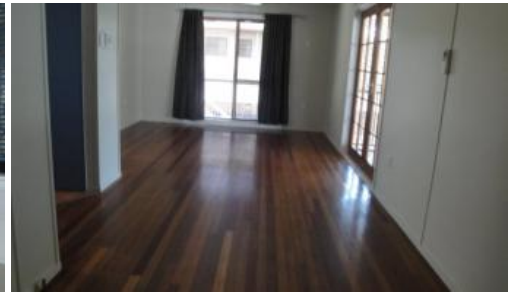


Leased



31 Riechelmann Street, Heatley



APPLICATIONS CLOSED - Cool Back Deck & 6x6 Powered Shed

APPLICATIONS CLOSED

This fully air conditioned family home offers a large deck and 3 spacious bedrooms.

Features include:

- Fully Air Conditioner throughout
- Polished floors throughout
- Three good sized bedrooms with built in wardrobes
- Open dining and living area with access to deck.
- Neat kitchen with ample cupboard, pantry and bench space.
- Large fully screened deck.
- Enclosed area downstairs with toilet and air conditioned office.
- Double carport
- 6 x 6 powered shed.
- Fenced yard with double gate access to back yard.
- NBN Ready

This property is centrally located, close to transport, shops and local parks.

Available 06th October 2020

Please complete the 1 Form application online or contact the office on 07 4773 9344 to have an application form emailed. All pre-approved applications will be contacted to arrange an inspection.

 3  1  2

Price

\$330 Per Week

Property Type

Rental

Property ID

970

Land Area

0 m2

Agent Details

Office Details

Kirwan

0412 340 207



PropertyOz.com

Advertising disclaimer - Please note - All parties should make and rely upon their own enquiries in order to determine the suitability of a property based on the advertised information. Personal inspection is recommended – please contact our office to arrange.

The above information provided has been furnished to us by the vendor/s. We have not verified whether or not that information is accurate and do not have any belief in one way or the other in its accuracy. We do not accept any responsibility to any person for its accuracy and do no more than pass it on. All interested parties should make and rely upon their own inquiries in order to determine whether or not this information is in fact accurate.